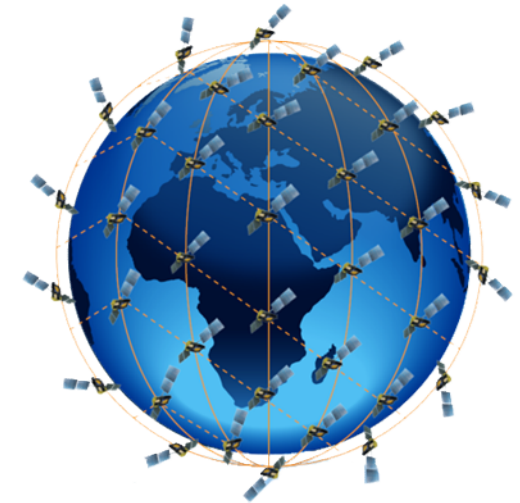
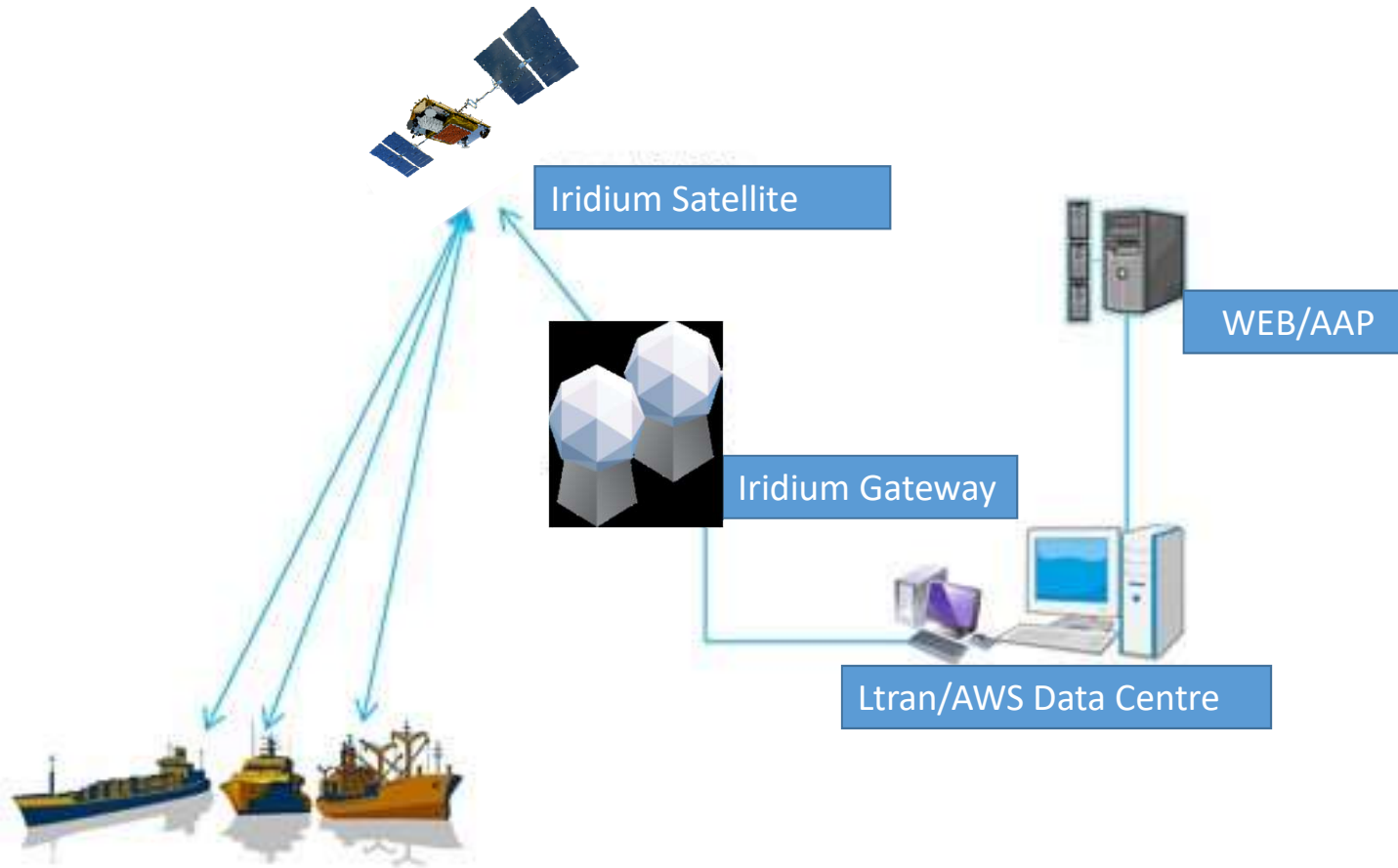


Vessel Tracking and Monitoring



OVERVIEW



The Iridium® Network

- 66 Active Satellites
- Low-Earth Orbit (LEO)
- L-band System
- Satellite Crosslinks

HARDWARE

Iridium Edge® Solar



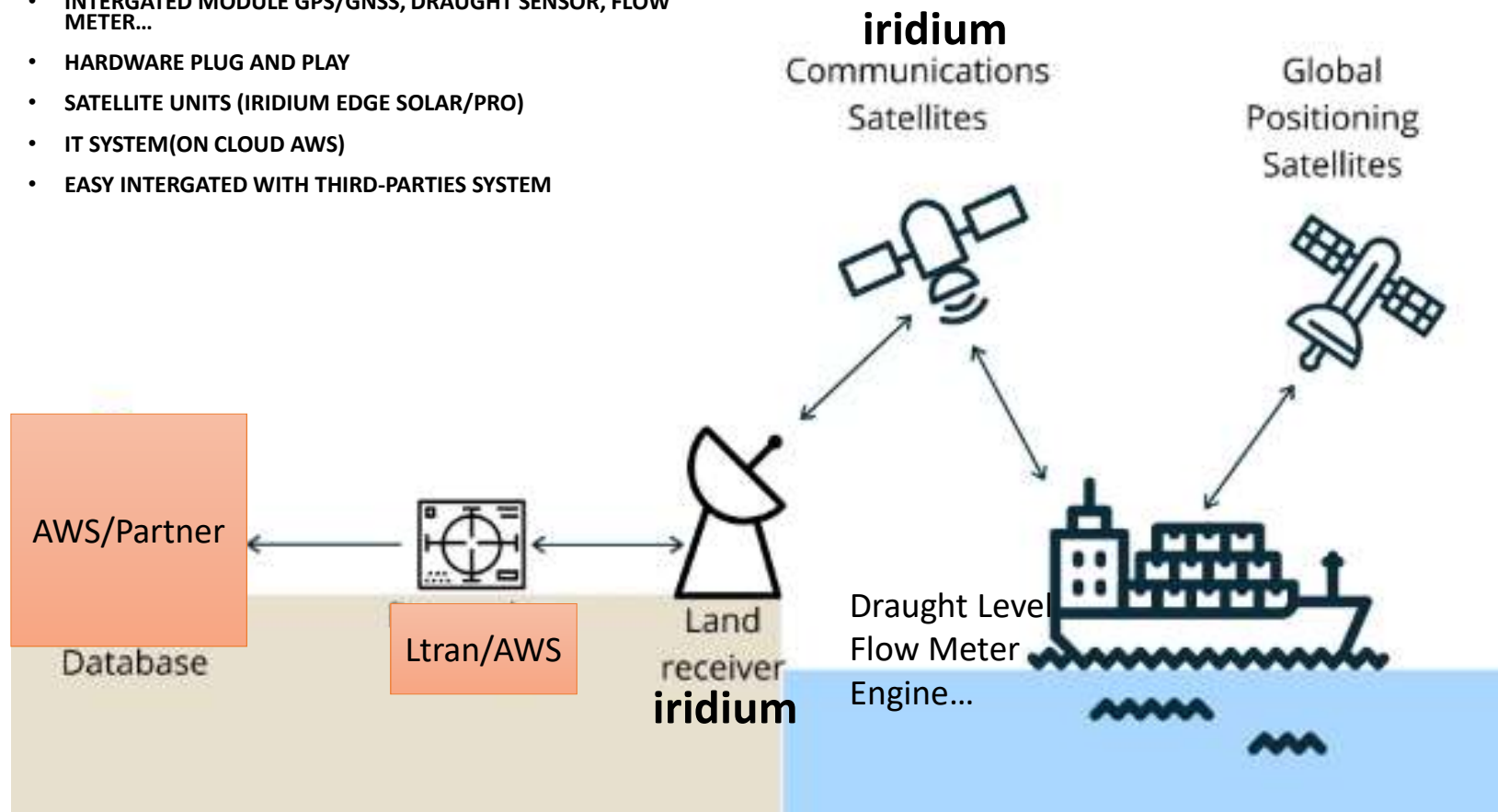
Iridium Edge® Pro

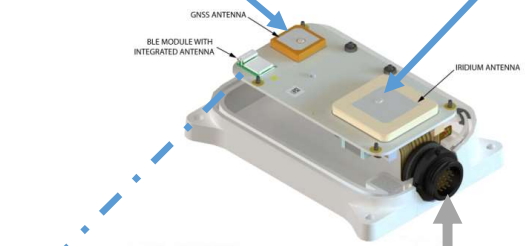
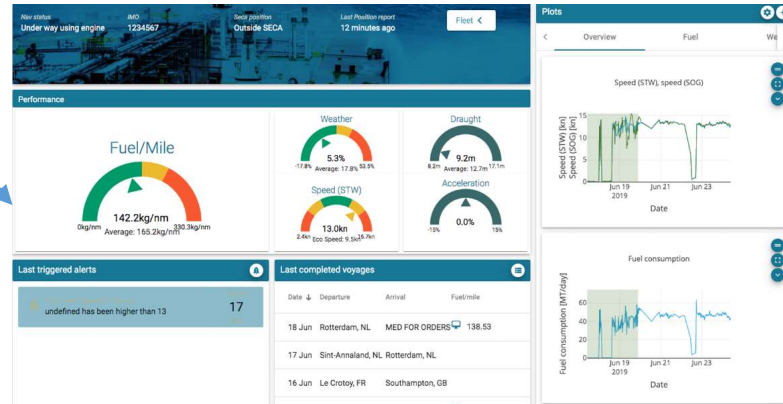
A white, rectangular electronic device with a black connector on the side and the Iridium logo on top.

- Bluetooth/BLE
- GPS + Accelerometer
- Temperature Sensing
- CANbus & Modbus
- Two-Way Connectivity through Short Burst Data®
- Digital + Analog Inputs and Outputs

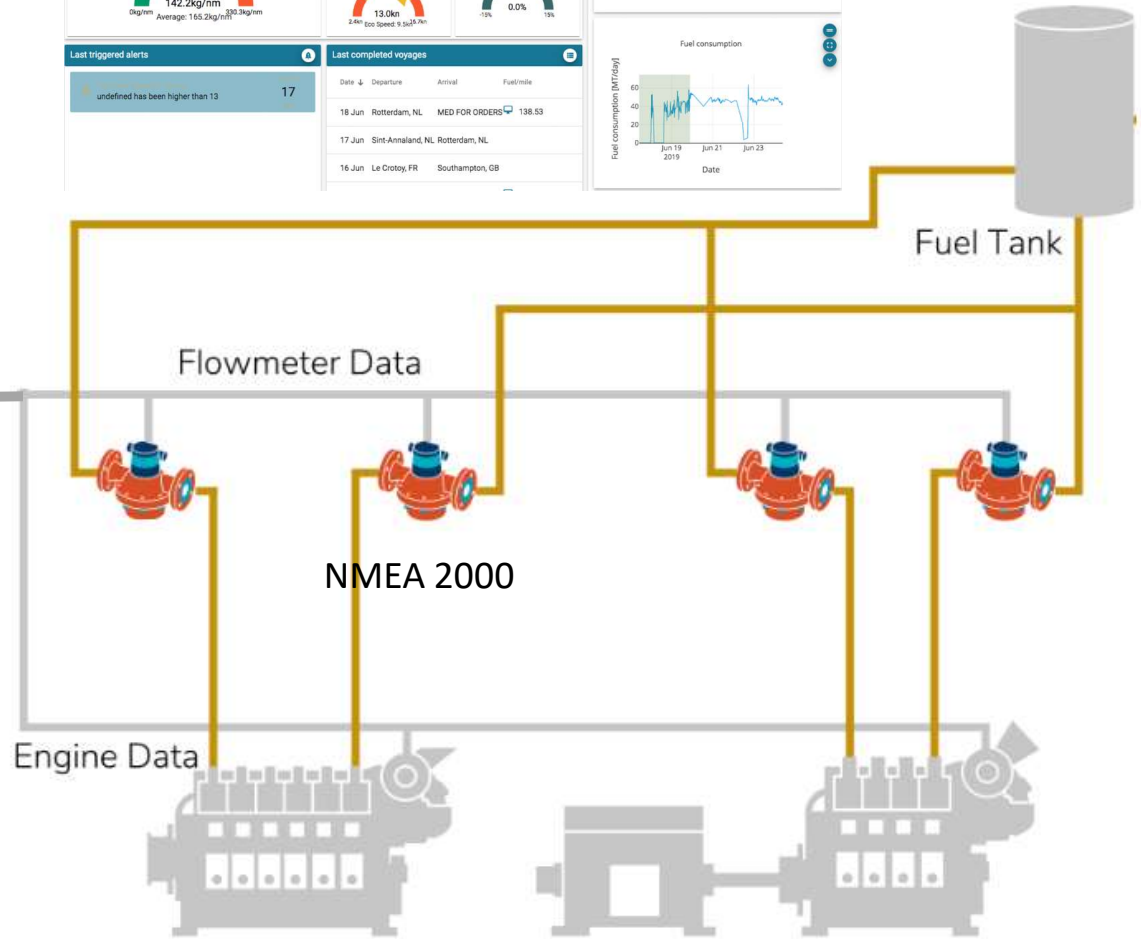
SYSTEM:

- INTERGATED MODULE GPS/GNSS, DRAUGHT SENSOR, FLOW METER...
- HARDWARE PLUG AND PLAY
- SATELLITE UNITS (IRIDIUM EDGE SOLAR/PRO)
- IT SYSTEM(ON CLOUD AWS)
- EASY INTERGATED WITH THIRD-PARTIES SYSTEM





BLE
NMEA

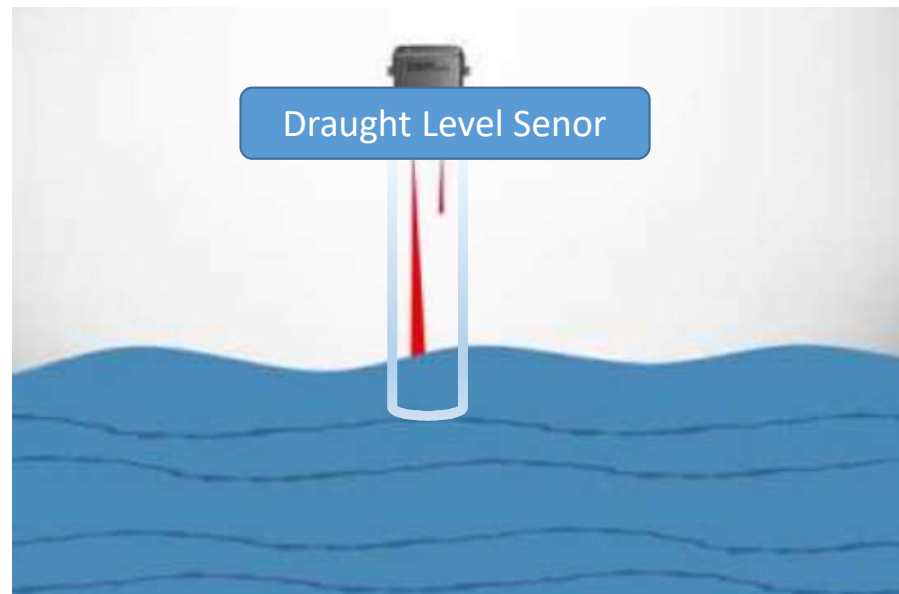


DRAUGHT SENSOR:

IP 67, Range: 15-20 meter

Warranty: 12 months

Data sampling every 1 second, filter and averaging before send to office every 1 hours via iridium Satellite



LEO System and Solar Power

Satellite Units (Iridium Edge[®]
Solar/Pro)

Addon UI for ELOG BOOK (Tablet
PC)

IT System (Database, Server,
Software)

Notes:

- Reliable hardware with Marine Standard(made by iridium)
- Plug and Play(Not Require for Installation Service)
- Satellite Hardware can last 5-10 years(1 year warranty)
- Easy to customized software and UI Data and server on Cloud AWS
- Source code develop by team in house